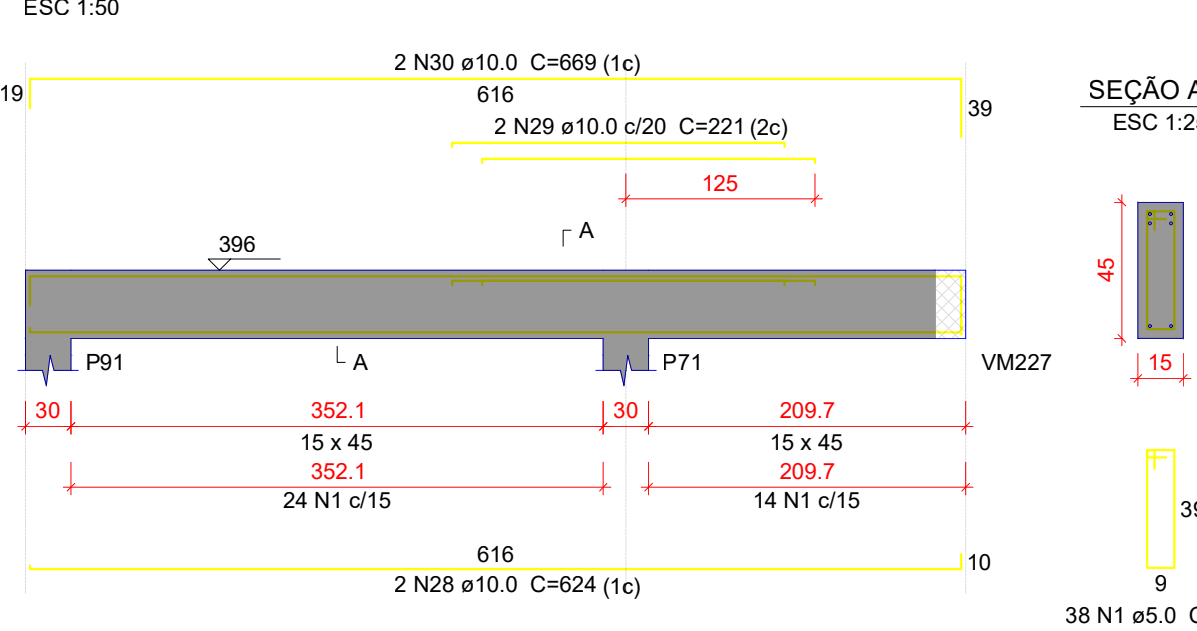
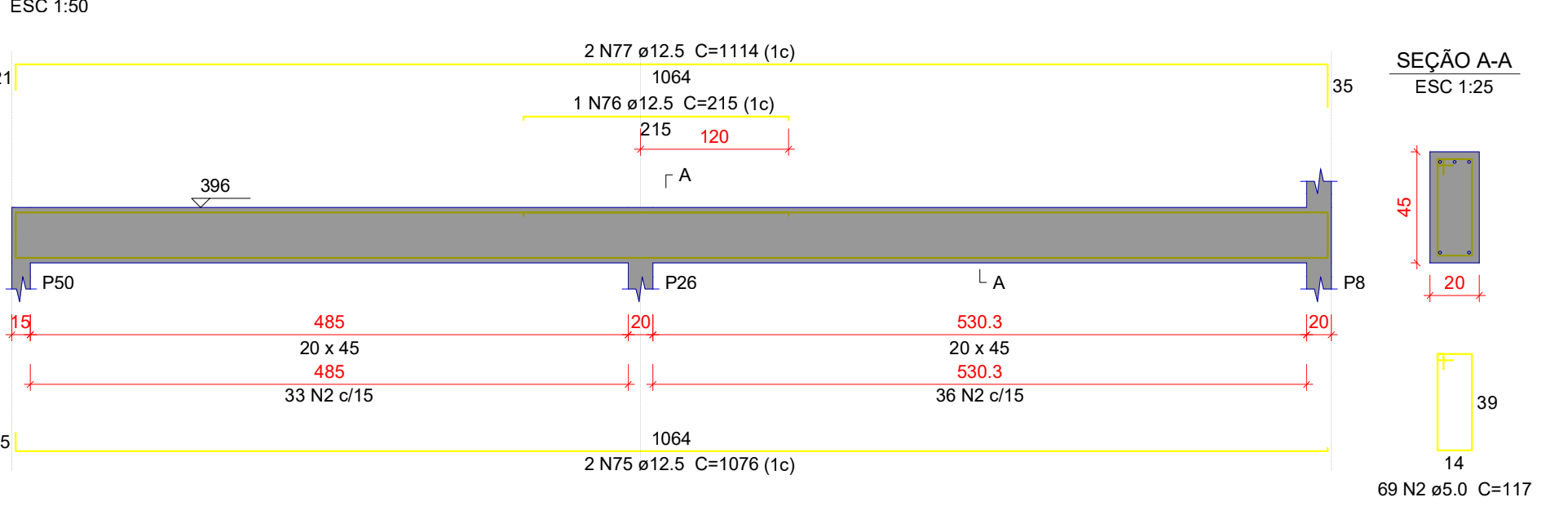


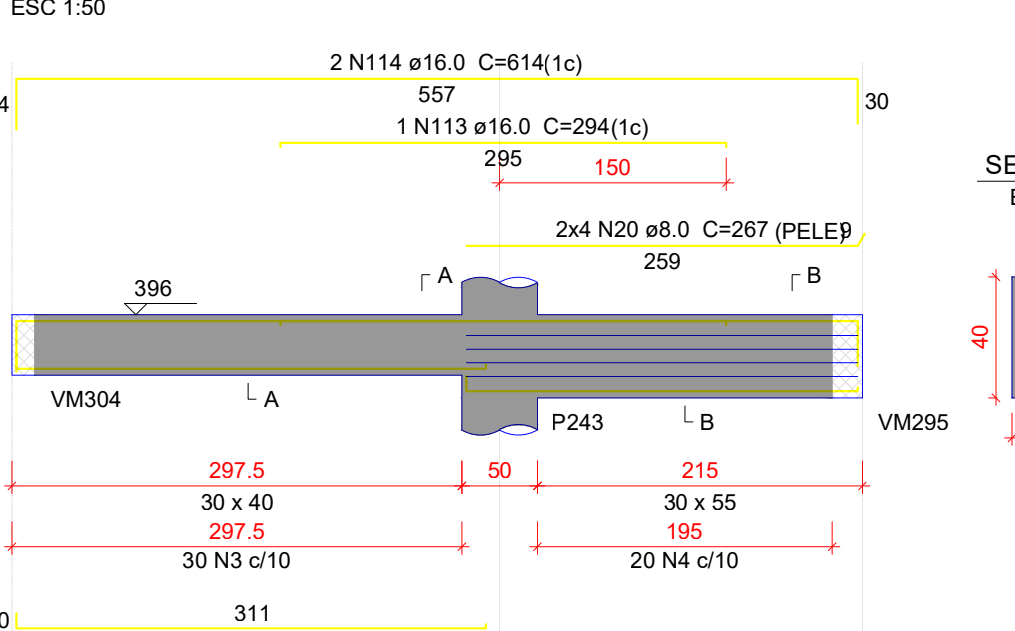
VM353



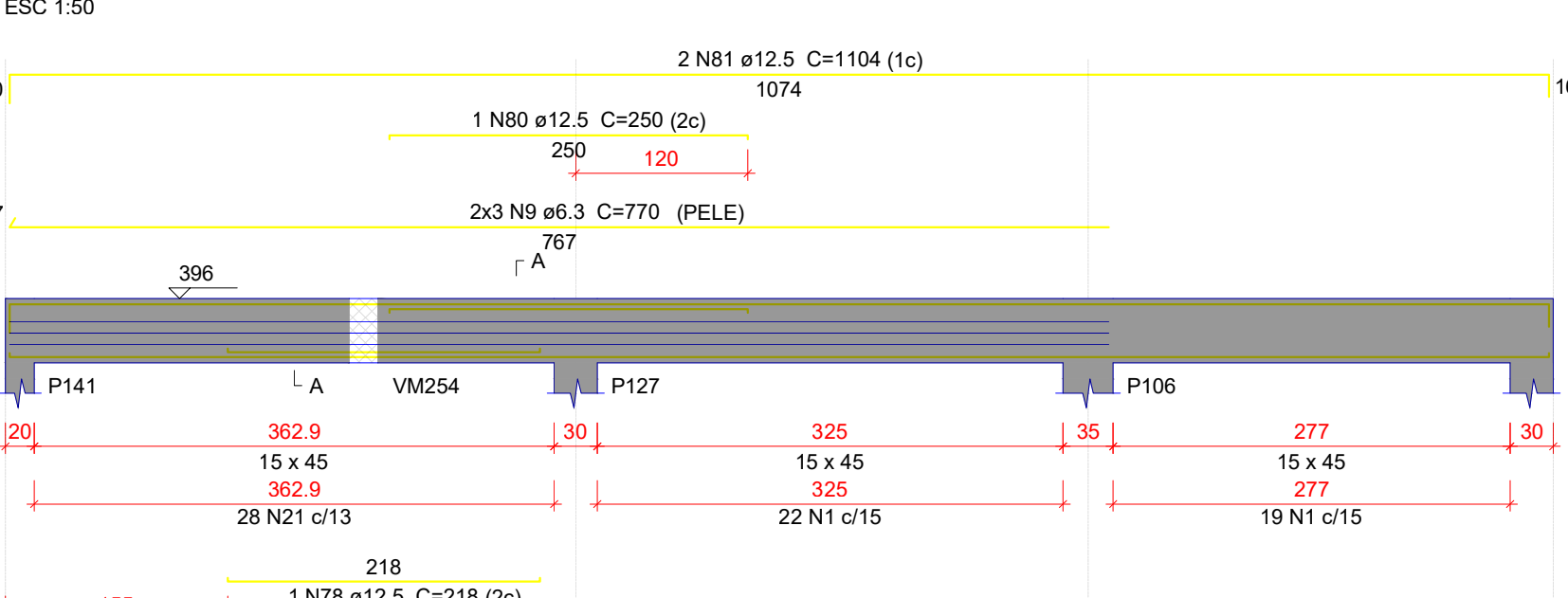
VM354



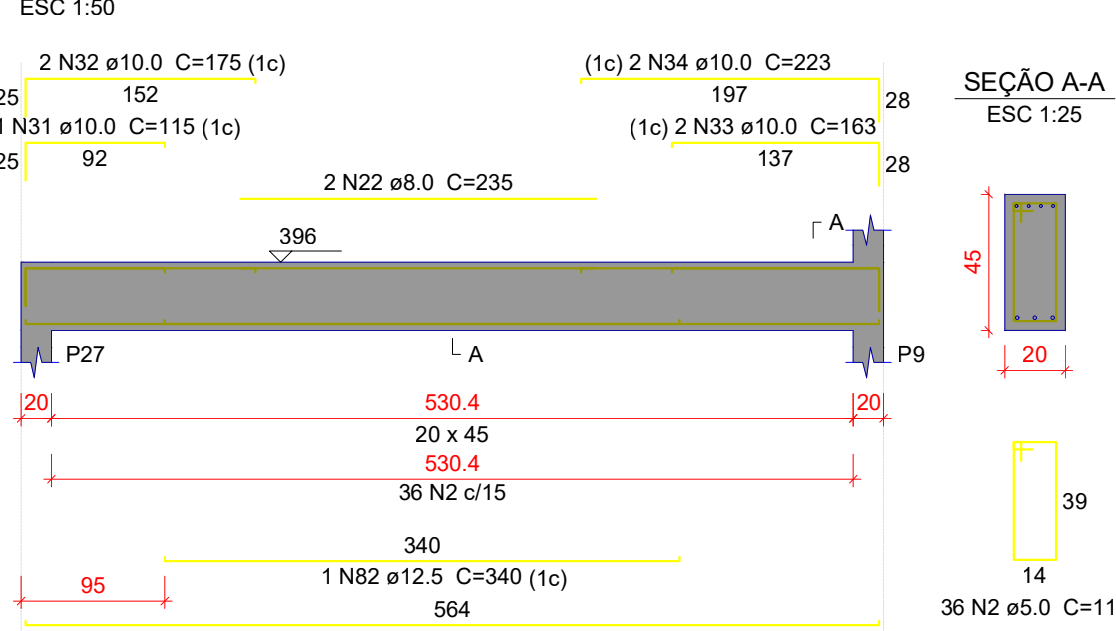
VM355



VM356



VM357



Relação do aço

ACO	N	DIAM (mm)	QUANT	C UNIT	C TOTAL
CA50	1	5.0	394	107	42158
	2	5.0	117	107	12519
	3	5.0	60	127	7620
	4	5.0	42	157	6594
	5	5.0	2	158	316
	6	5.0	6	107	642
	7	5.0	7	122	854
	8	5.0	3	87	261
	9	6.3	770	770	4620
	10	6.3	194	178	34522
	11	6.3	6	349	2094
	12	6.3	240	1440	34522
	13	6.3	6	707	4242
	14	6.3	6	454	2724
	15	6.3	6	424	2544
	16	6.3	6	704	4224
	17	6.3	6	462	2772
	18	6.3	6	329	1974
	19	6.3	31	118	3658
	20	8.0	16	267	4272
	21	8.0	56	108	6048
	22	8.0	2	235	470
	23	8.0	2	205	410
	24	8.0	8	1086	8688
	25	8.0	3	138	414
	26	8.0	2	190	380
	27	8.0	2	175	350
	28	10.0	2	624	1248
	29	10.0	2	221	442
	30	10.0	2	609	1218
	31	10.0	1	115	115
	32	10.0	2	175	350
	33	10.0	2	163	326
	34	10.0	2	223	446
	35	10.0	2	626	1252
	36	10.0	2	714	1428
	37	10.0	2	178	356
	38	10.0	2	656	1312
	39	10.0	2	714	1428
	40	10.0	1	176	176
	41	10.0	1	179	179
	42	10.0	2	229	458
	43	10.0	2	753	1506
	44	10.0	1	125	125
	45	10.0	2	161	322
	46	10.0	1	125	125
	47	10.0	2	665	1330
	48	10.0	3	241	723
	49	10.0	2	1130	2260
	50	10.0	2	217	434
	51	10.0	2	146	292
	52	10.0	2	228	456
	53	10.0	2	258	516
	54	10.0	2	258	516
	55	10.0	2	1083	2166
	56	10.0	1	206	206
	57	10.0	2	110	220
	58	10.0	1	209	209
	59	10.0	2	916	1832
	60	10.0	2	151	302
	61	10.0	1	135	135
	62	10.0	1	340	340
	63	10.0	1	200	200
	64	10.0	1	425	425
	65	10.0	2	970	1940
	66	10.0	2	156	312
	67	10.0	2	657	1314
	68	10.0	2	500	1000
	69	10.0	1	176	176
	70	10.0	2	803	1606
	71	10.0	2	181	362
	72	10.0	2	840	1680
	73	10.0	2	401	802
	74	10.0	2	840	1680
	75	12.5	2	1076	2152
	76	12.5	1	215	215
	77	12.5	1	1114	2228
	78	12.5	1	218	218
	79	12.5	2	1074	2148
	80	12.5	1	250	250
	81	12.5	2	1104	2208
	82	12.5	1	340	340
	83	12.5	2	564	1128
	84	12.5	1	323	323
	85	12.5	2	844	1688
	86	12.5	1	225	225
	87	12.5	2	877	1754
	88	12.5	6	112	672
	89	12.5	1	314	314
	90	12.5	2	1023	2046
	91	12.5	1	205	205
	92	12.5	3	300	900
	93	12.5	2	1081	2162
	94	12.5	2	522	1044
	95	12.5	2	185	370
	96	12.5	2	580	1160
	97	12.5	2	1044	2088
	98	12.5	2	179	358
	99	12.5	2	240	480
	100	12.5	1	173	173
	101	12.5	1	189	189
	102	12.5	2	1186	2372
	103	12.5	1	350	350
	104	12.5	2	861	1722
	105	12.5	2	459	918
	106	12.5	2	178	356
	107	12.5	1	235	235
	108	12.5	2	163	326
	109	12.5	2	1195	2390
	110	12.5	2	207	414
	111	16.0	4	317	1268
	112	16.0	2	285	570
	113	16.0	3	294	882
	114	16.0	2	614	1228
	115	16.0	2	779	1558
	116	16.0	1	314	314
	117	16.0	2	517	1034
	118	16.0	2	1019	2038
	119	16.0	1	339	339
	120	16.0	2	1074	2148
	121	16.0	2	272	544
	122	16.0	2	633	1266
	123	16.0	2	1012	2024
	124	16.0	1	179	179
	125	16.0	1	309	309
	126	16.0	1	172	172
	127	16.0	2	1065	2130
	128	16.0	4	111	444
	129	16.0	1	266	266
	130	16.0	2	665	1330
	131	20.0	1	354	354
	132	20.0	2	1113	2226
	133	20.0	2	399	798
	134	20.0	2	1141	2282

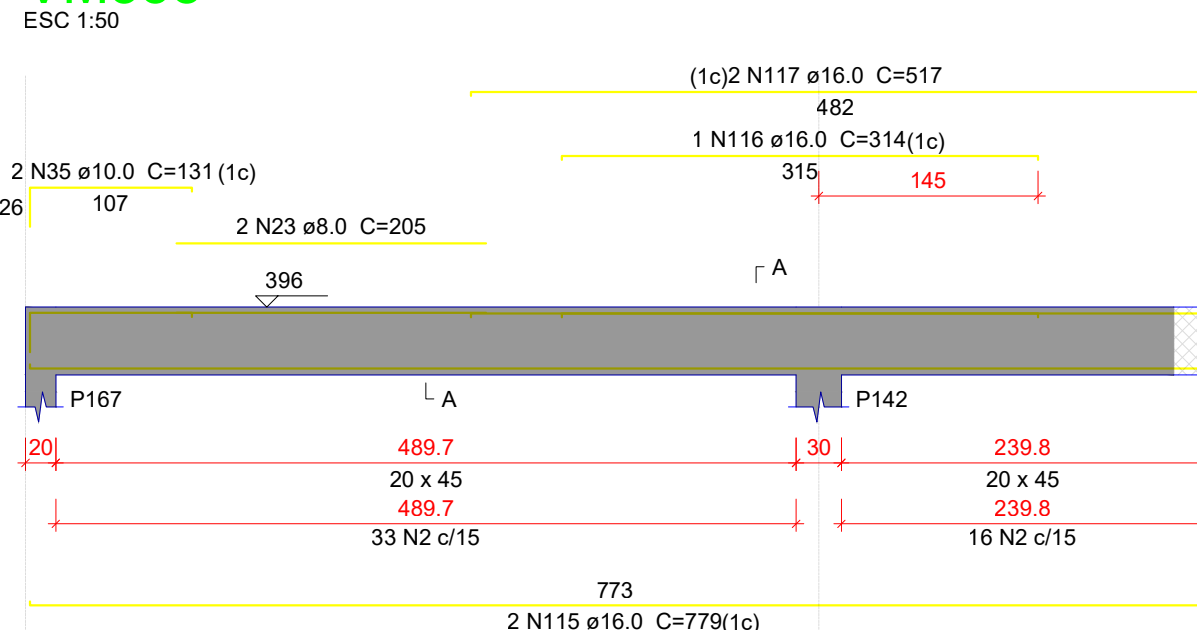
Resumo do aço

ACO	DIAM (mm)	C TOTAL	PESO + 10 %
CA50	6.3	648.3	174.5
	8.0	211.3	91.7
	10.0	343.7	233.1
	12.5	363.5	385.1
	16.0	200.1	347.3
	20.0	56.6	153.5
CA50	5.0	1324.8	224.6
CA50	385.2		
CA50	224.6		

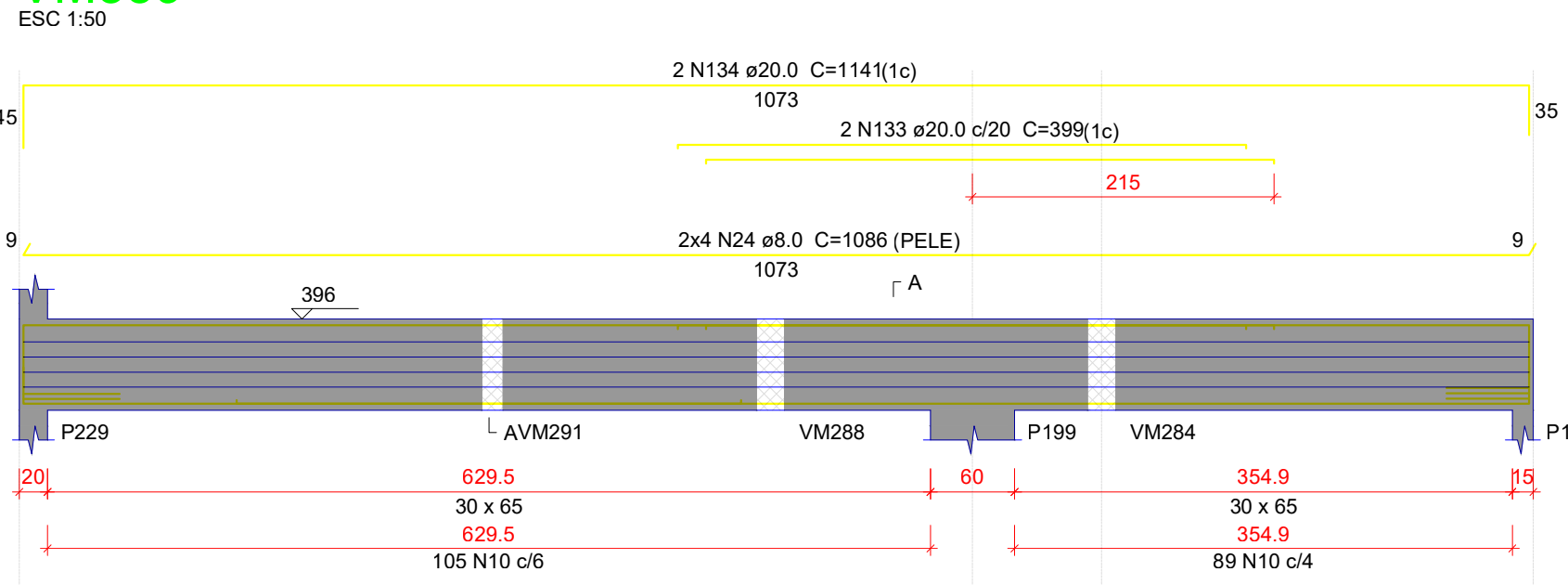
Volume de concreto (C=35) = 16.42 m³

Área de forma = 128.62 m²

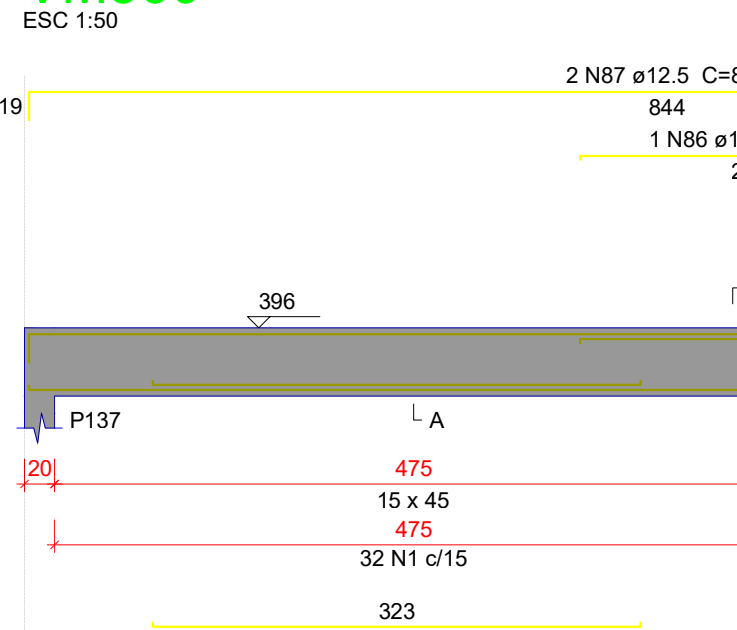
VM358



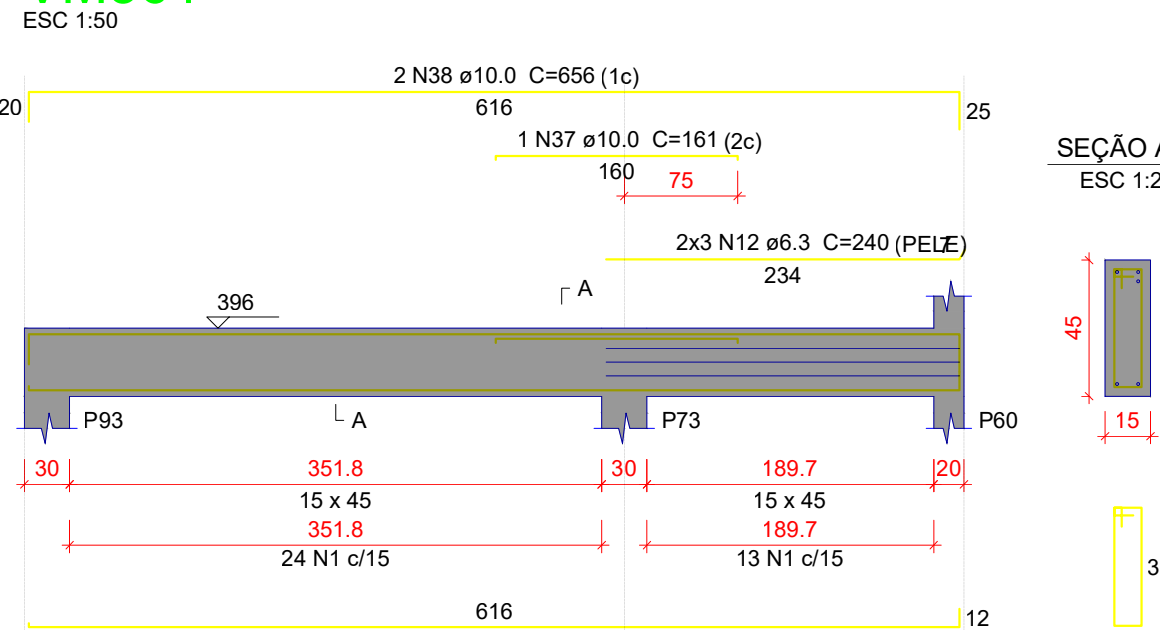
VM359



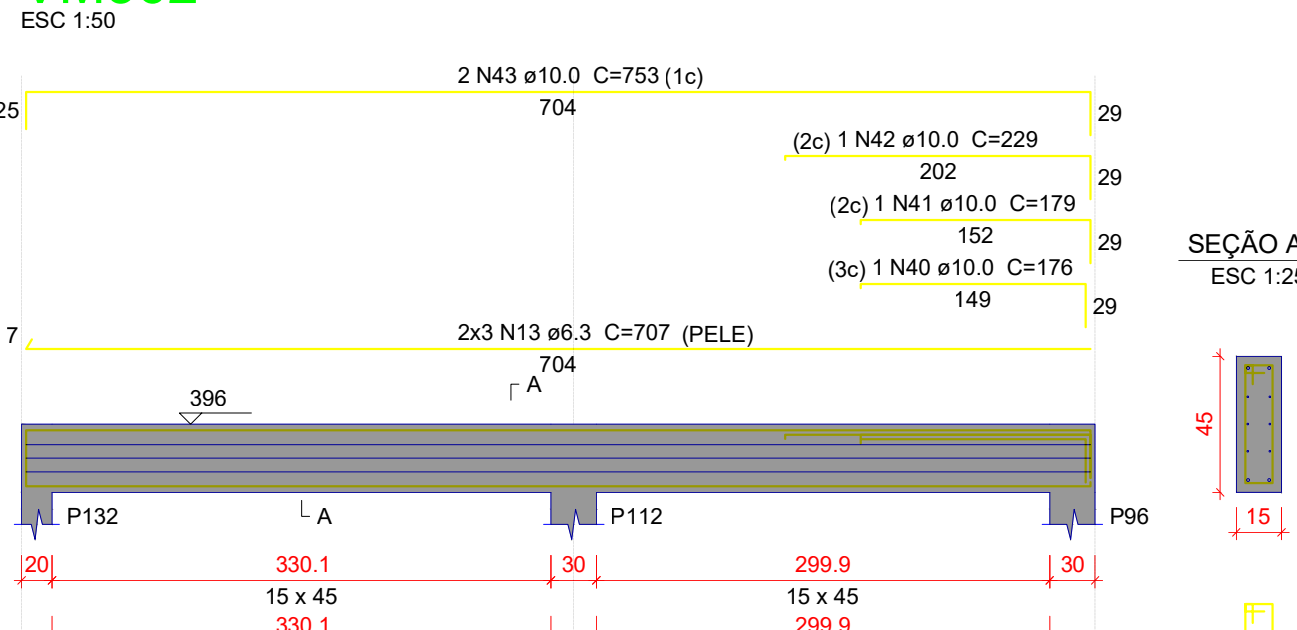
VM360



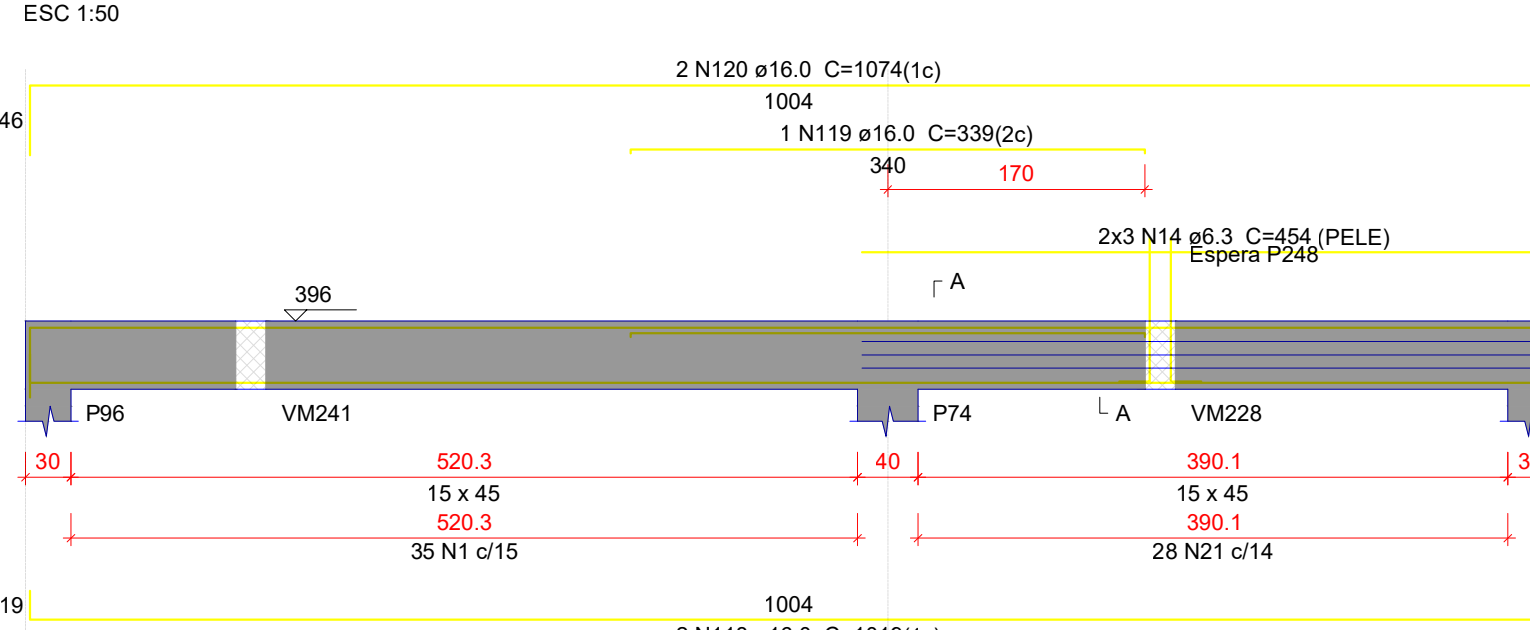
VM361



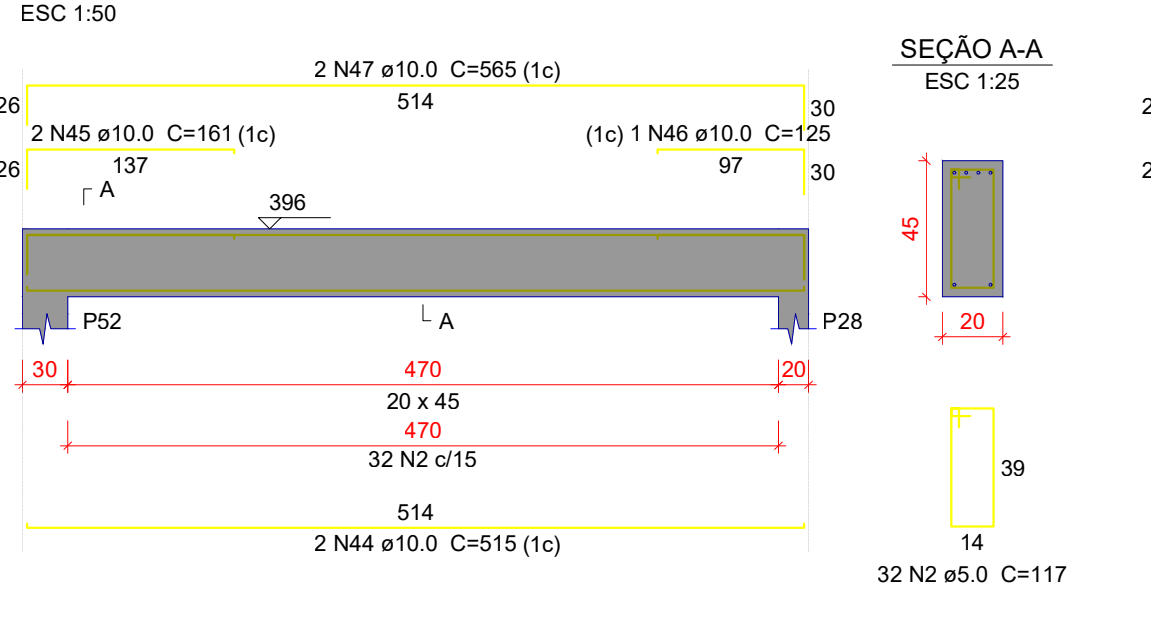
VM362



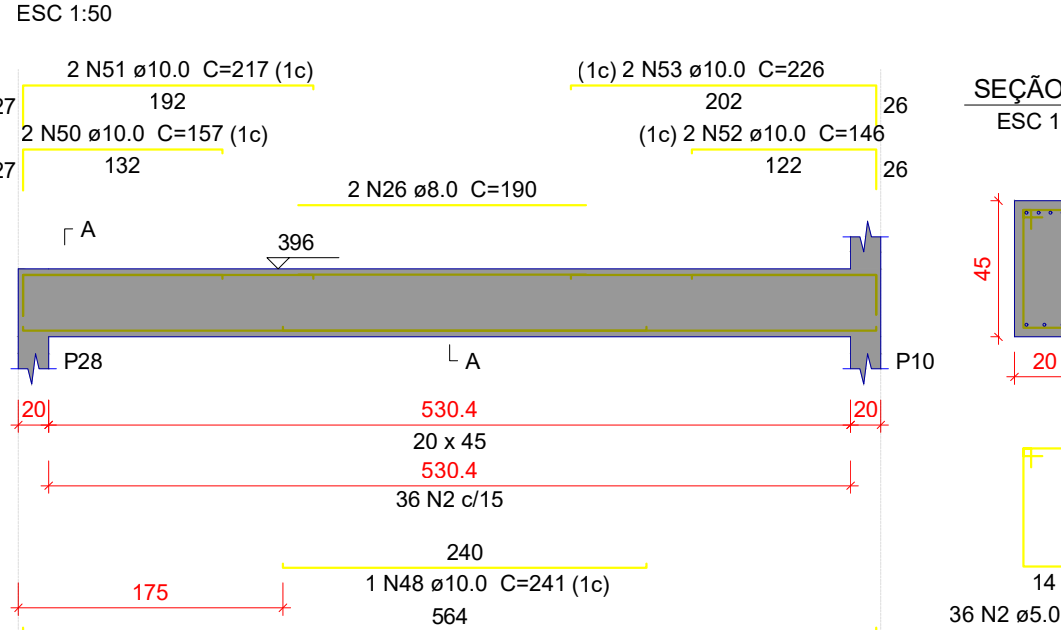
VM363



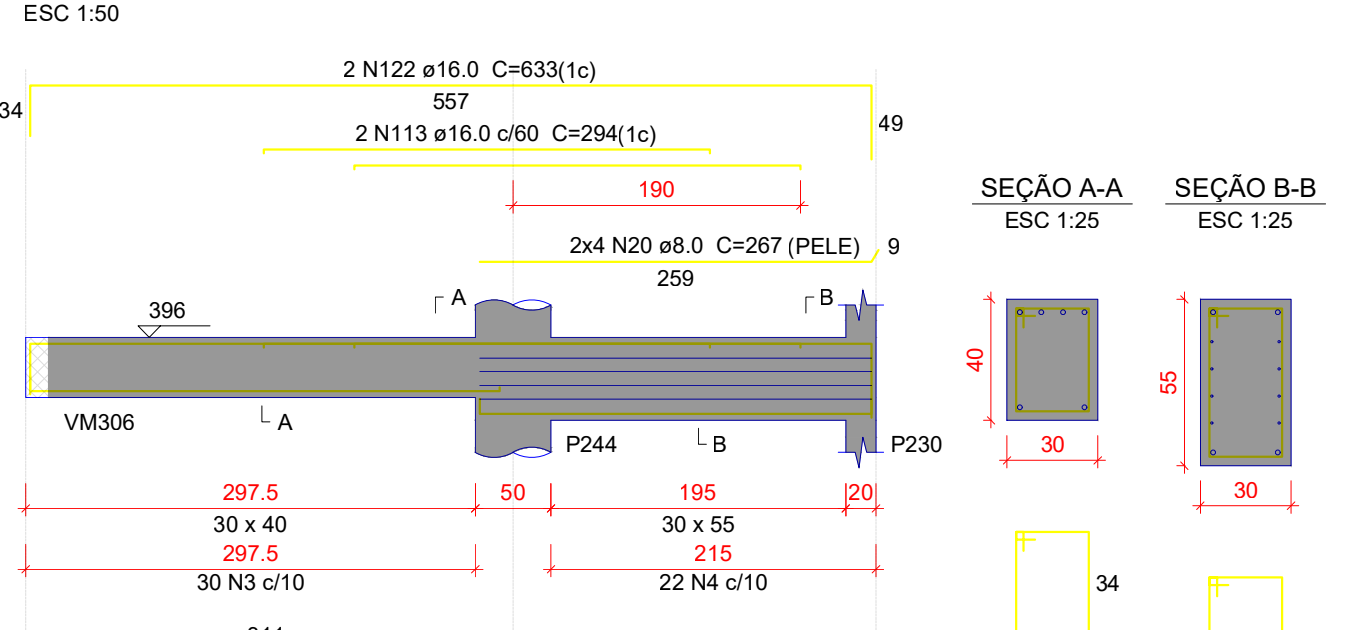
VM364



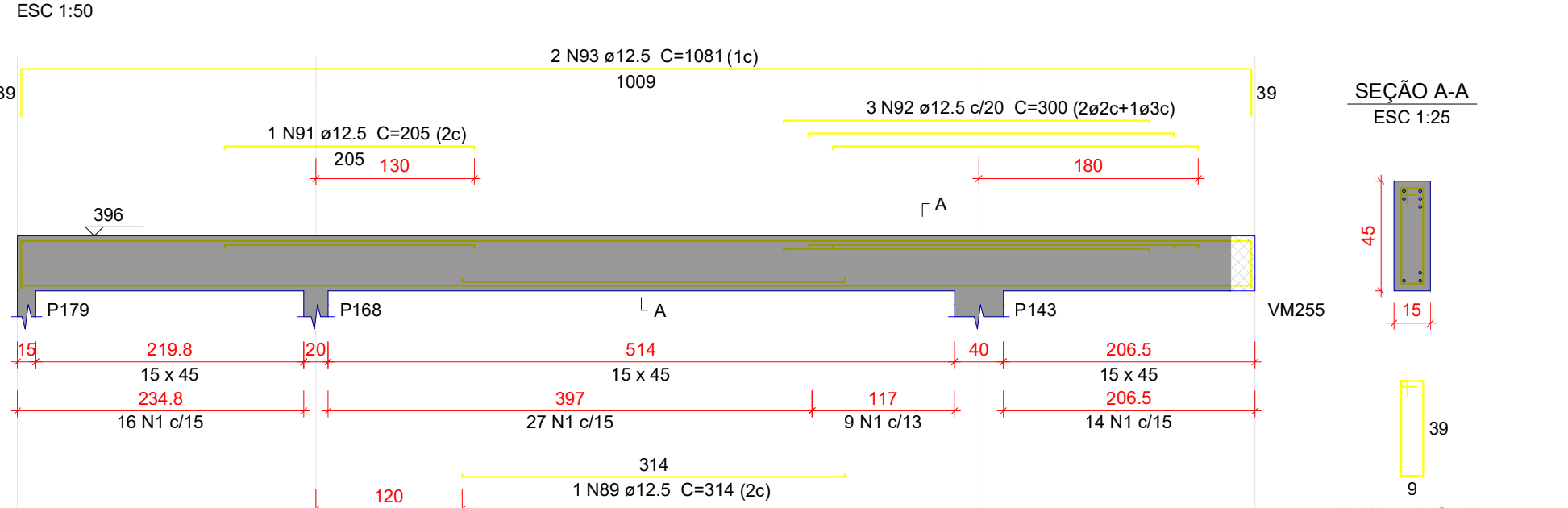
VM365



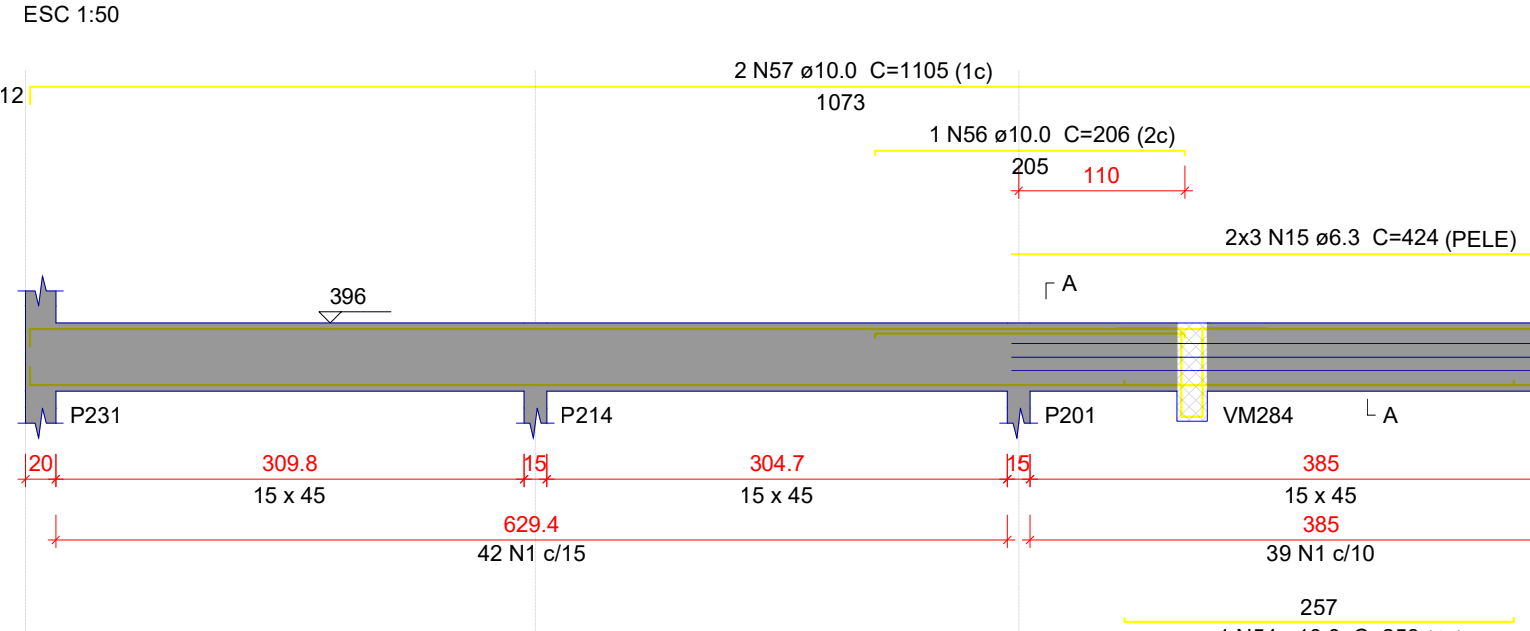
VM366



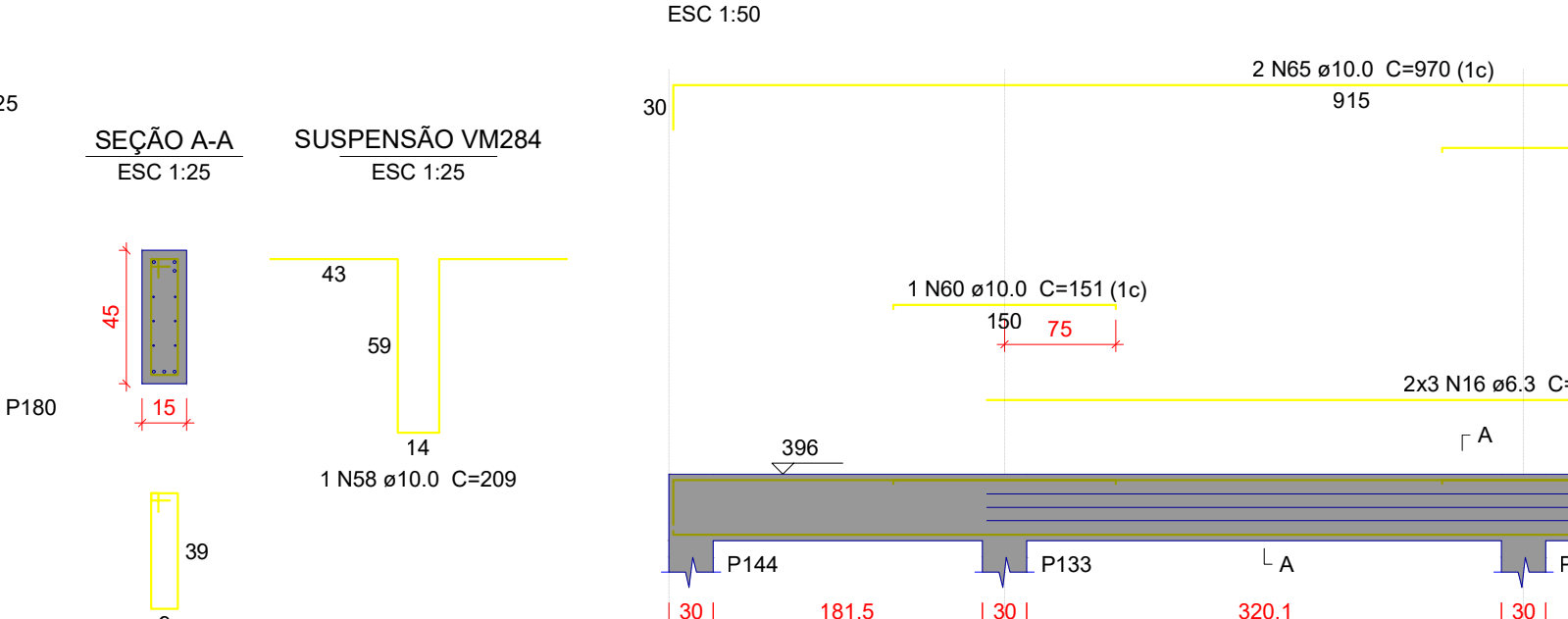
VM367



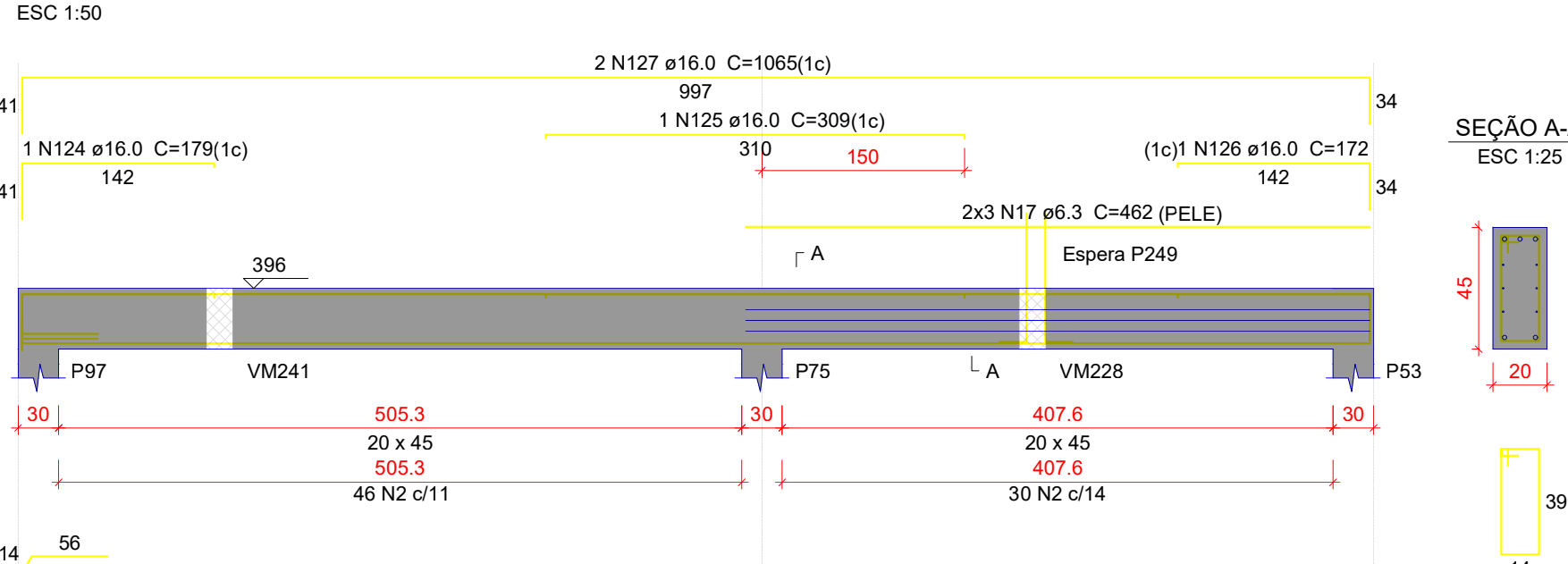
VM368



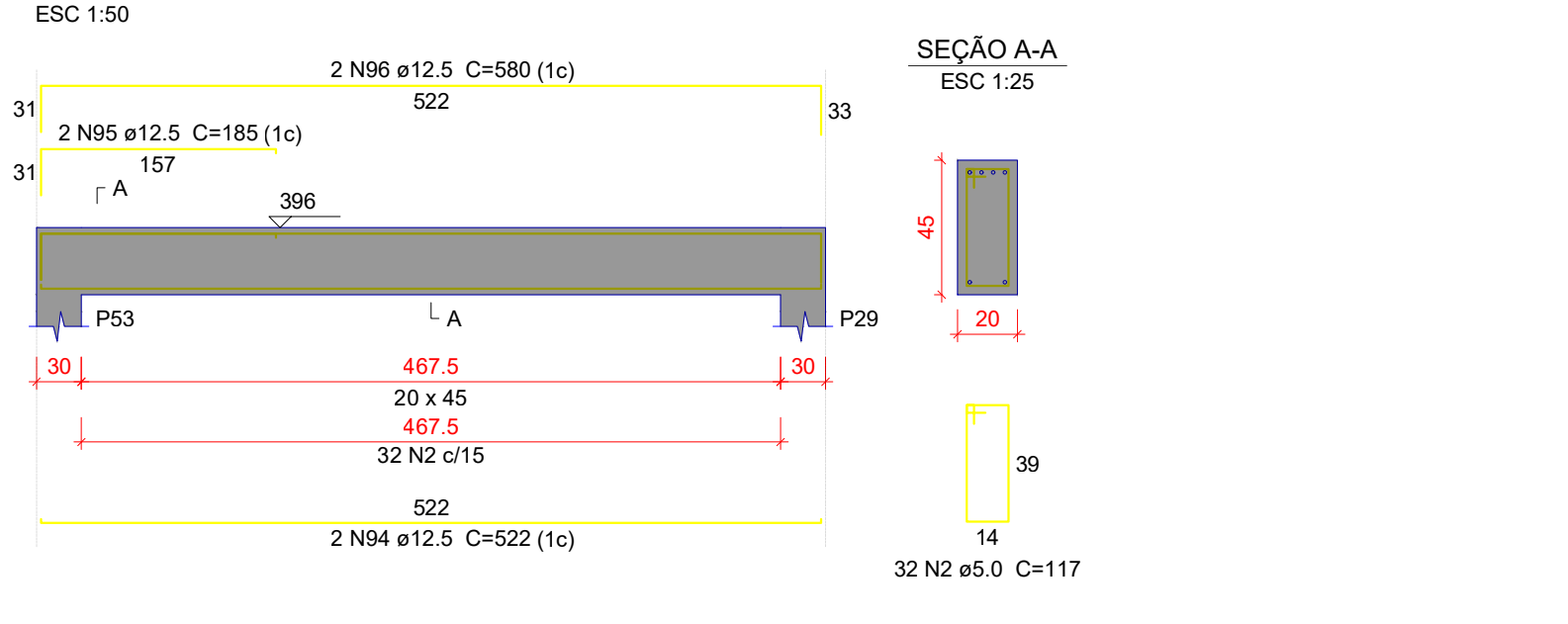
VM369



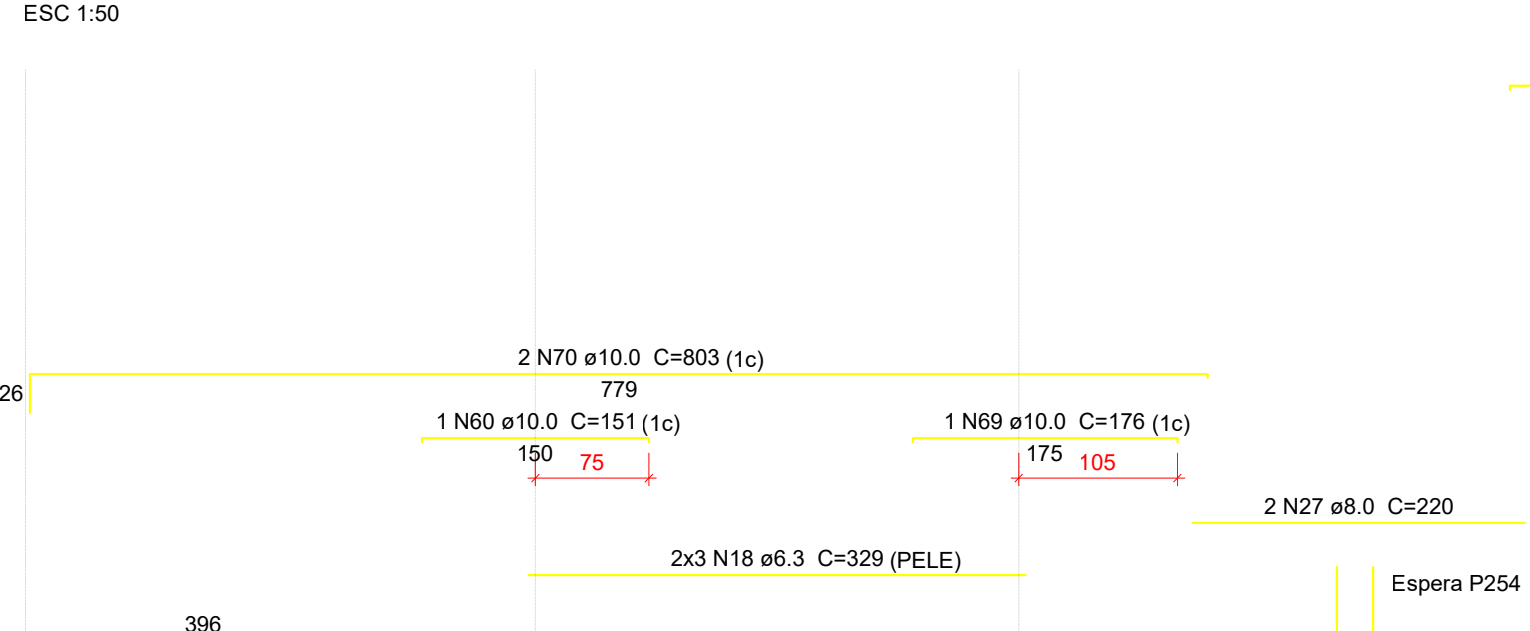
VM370



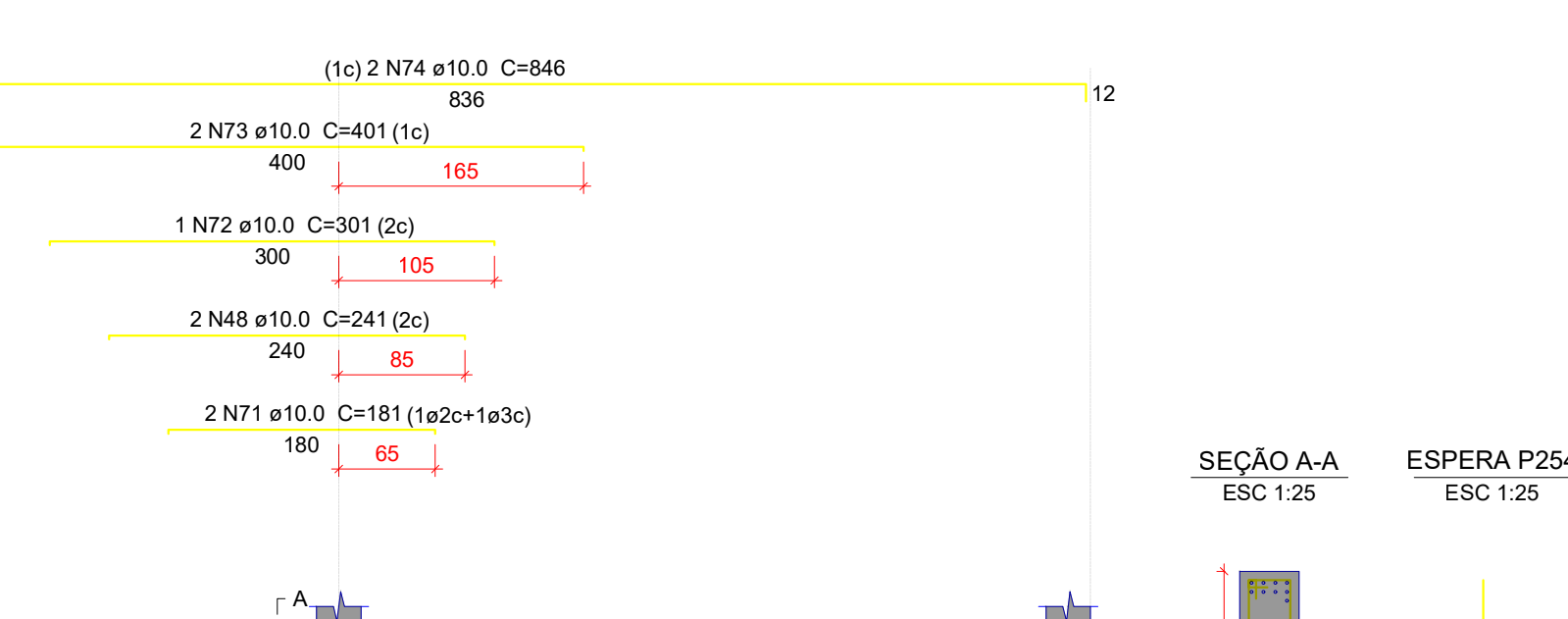
VM371



VM372



VM373



VM374

